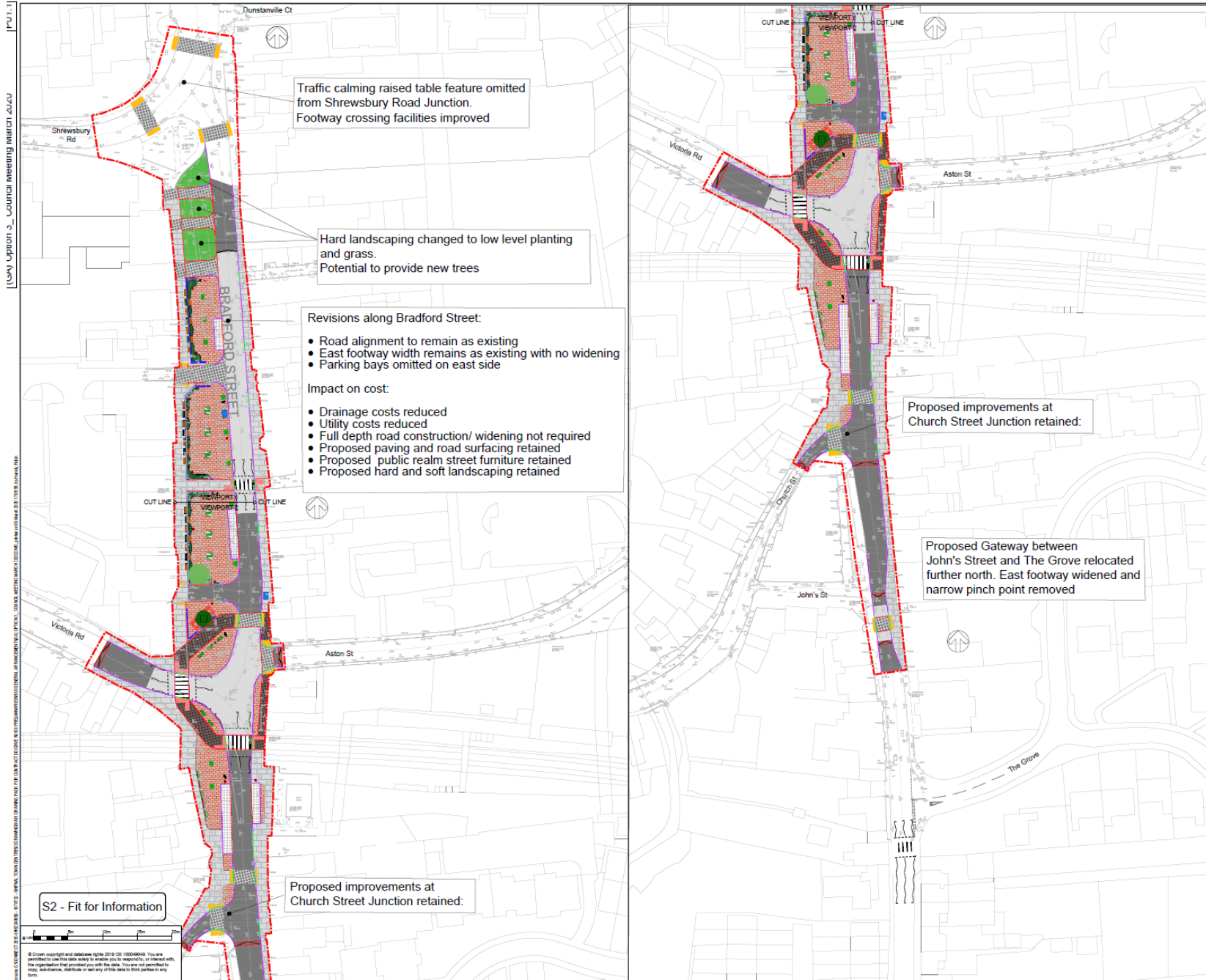


# Appendix B Approved Shifnal Town Centre Improvement Design



**DO NOT SCALE**

**Scheme Wide Notes**  
Do not scale - Use only figured dimensions  
The contractor is to check all dimensions on site and report any discrepancies to the Site Supervisor.  
This drawing is to be read in conjunction with all other standard documentation.

**RESIDUAL DESIGN HAZARDS**  
For all Residual Design Hazards refer to drawing 62240659-WCP-GEN-A2\_PRR-OR-0100-0003

**KEY**

**MATERIALS**

- Pavement Type A (General cartageway).
- Pavement Type B (Raised plateau)
- Pavement Type C (Pedestrian route in cartageway).
- Pavement Type C (Parking bay).
- Footway Type 1 (General footway).
- Footway Type 2 (Feature footway).
- Footway Type 3 (Pedestrian route in footway).
- Footway Type 4 (Tactile paving formal crossing).
- Footway Type 5 (Tactile paving informal crossing).
- Proposed landscaped area.
- Proposed flush concrete kerbs.
- Proposed 60mm concrete conservation kerb.
- Proposed 60mm concrete conservation kerb with dropped kerbs.

**MOVEABLE & FIXED FURNITURE**

- Existing and retained tree
- Proposed tree with tree pit
- Aes Heritage bus shelter or similar approved
- Long bench with back and / or armrest
- Streetlife Clip cycle stand or similar approved
- Proposed ramp to raised area.
- Marshalls Demetra concrete planter or similar approved
- Furnitures Zenith stainless steel bin or similar approved
- Low level kerbed planted bed.
- Marshalls Demetra combined seat and planter or similar approved.
- Streetlife Love Tub planter or similar approved.
- Proposed low height book retaining wall.
- Site Extents

REV	DATE	BY	DESCRIPTION	CHK	APP
P01.1	18 Oct 2019	TH			

**D2 - FIT FOR TENDER**

**wsp**

2nd Floor Shifnal, Abbey Foregate, Shrewsbury, SY2 6ND, UK  
T: +44 (0) 151 587 4433  
W: wsp.co.uk

**Shropshire**

**Shifnal Town Centre Improvement Scheme**

**GENERAL ARRANGEMENT VE1 OPTION 3**

SCALE @ 1:250	DESIGNED	DRAWN	DATE	SCALE
PROJECT NO: 62240659	DESIGNED: RH	TH	DATE: 18 OCT 2019	SCALE: A3

62240659-SK-1001 P01.1

WSP UK Ltd